



May 2020

Optimizing Your Digital Portfolio

Driving efficiencies through a holistic approach to critical infrastructure strategy

Under normal circumstances, planning and implementing an integrated network, infrastructure and real estate solution poses a unique challenge. During the COVID-19 pandemic, maintaining connectivity and availability becomes even more mission-critical, requiring a holistic approach that incorporates the disciplines of network engineering, IT systems, real estate and finance.

Corporate real estate and IT professionals can rely on Savills as a partner in establishing a comprehensive strategic plan. By leveraging information across all these disciplines, Savills will deliver a single-lens view into your operations and empower you to make informed and efficient decisions around timing, cost and flexibility.

Business Challenge:

Strategic planning across three disciplines:

- Real Estate & Facilities
- Products, Services & Business Units
- Network Connectivity & IT Infrastructure

Savills Solution:

To solve this challenge, Savills brings a multi-discipline approach to develop, analyze and implement solutions to deliver superior, objective and data-driven results.

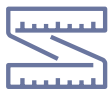
Savills leverages:

- Award-winning client technology solutions for real estate portfolio management (Knowledge Cubed Platform)
- Industry-leading network engineering and IT solutions consulting
- Best-in-class, bespoke financial analytics

How we do it:

- IT-focused, consultative and conflict-free approach
- Multi-disciplined core team: Real estate, IT, financial analytics expertise
- Data-driven, objective decision making

Three-Step Approach to Optimizing your Digital Portfolio



Measure

There has never been a more critical time for businesses to ensure their IT infrastructure is performing efficiently. This includes on-premise data centers, co-location facilities, network services, cloud-based workloads and everything in between. You need efficient technical and financial performance in support of your current business objectives and drivers.

Savills begins with a current state analysis measuring the technical, financial and operational metrics most critical to your business. Then, we create custom analytics, working alongside business unit leaders to understand their central objectives. As a result, we deliver bespoke consulting and analytics to provide an accurate snapshot of the key performance indicators that matter most to you.

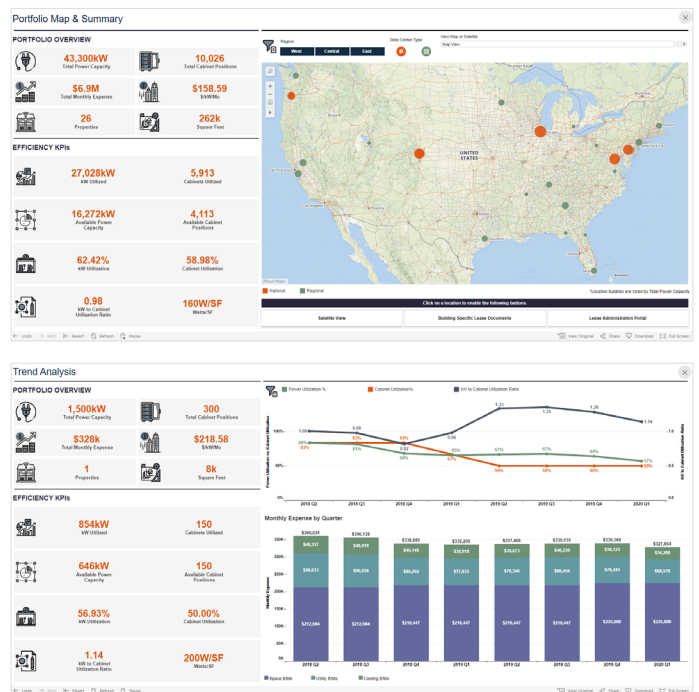


Communicate

Making informed IT decisions requires businesses to overcome the challenge of ensuring that cross-functional teams have access to critical information, delivered in non-technical terms that they can easily digest.

You need an experienced partner who can explain key concepts around technology, finance and real estate, serving as a liaison between these teams, drastically reducing the time required to reach consensus and make informed decisions.

Savills subject matter experts bring a wide range of skillsets, including IT infrastructure, corporate finance and real estate, to each engagement. We ensure your most important concepts, goals and strategy are clearly communicated and understood among all key stakeholders.



Knowledge Cubed Data Center



Implement

Once an analysis is complete and consensus has been reached, it's time to implement. You need a data-driven infrastructure plan that has been objectively analyzed to simplify your go-forward strategy. Ideally, the plan highlights areas of immediate, near-term and long-term needs for your organization. This approach facilitates the coordination of corporate resources, so you can allocate budget, staff and time appropriately to deliver technology solutions that enhance your business objectives.

Savills partners with you to provide insight on service providers, technology solutions and industry trends that align with your identified go-forward strategy, reducing the time required to investigate and evaluate solutions while dramatically increasing the efficient use of corporate resources.

Savills fully integrated suite of services will ensure a unified technology strategy complements your organization's real estate strategy while both helping drive efficiency and maximizing the impact of your digital portfolio.

By Rick Drescher,
Ian Zilla & David Gordon

[Click here to view Rick's profile.](#)

[Click here to view Ian's profile.](#)

[Click here to view David's profile.](#)